



# SWITZER & ASSOCIATES

## GREG MULBERRY

REALTOR & AUCTIONEER

Home of  
**EVERYBODY'S  
REALTORS &  
AUCTIONEERS**

Serving your  
community since  
1959.

**GREG MULBERRY**

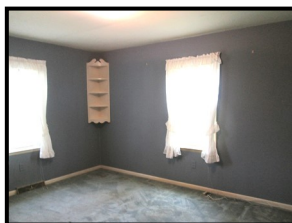


Cell  
**859-533-9655**

**Switzer & Associates**  
**Shawn Ritchey, CAI**  
Principal Broker  
111 S. Walnut St.  
Cynthiana, KY 41031  
Office  
**859-234-2911**  
**859-234-2912**  
Fax  
**859-234-6697**

Web-site  
[www.switzerassoc.com](http://www.switzerassoc.com)  
E-mail  
[switzer2911@bellsouth.net](mailto:switzer2911@bellsouth.net)

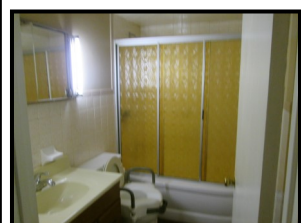
**5593 Hwy 154 Butler Ky 41006**



Nice country home located in the Peach Grove area of Northern Pendleton County.

2 bedrooms, 1½ baths, Living Room, Family Room, Eat in kitchen with refrigerator, range, dishwasher & microwave, Natural Gas furnace (less than a year old), Central air, 1 car attached garage and carport, partial basement situated on a half acre lot.

**\$199,900**



INFORMATION CONTAINED HEREIN IS BELIEVED TO BE ACCURATE BUT NOT WARRANTED