



SWITZER & ASSOCIATES

SHAWN RITCHEY, CAI

PRINCIPAL BROKER & AUCTIONEER

Home of
**EVERYBODY'S
REALTORS &
AUCTIONEERS**

Serving your
community since
1959.

**SHAWN RITCHEY
CAI**



Cell
859-588-0261

Switzer & Associates

Shawn Ritchey, CAI

Principal Broker
111 S. Walnut St.
Cynthiana, KY 41031

Office
859-234-2911

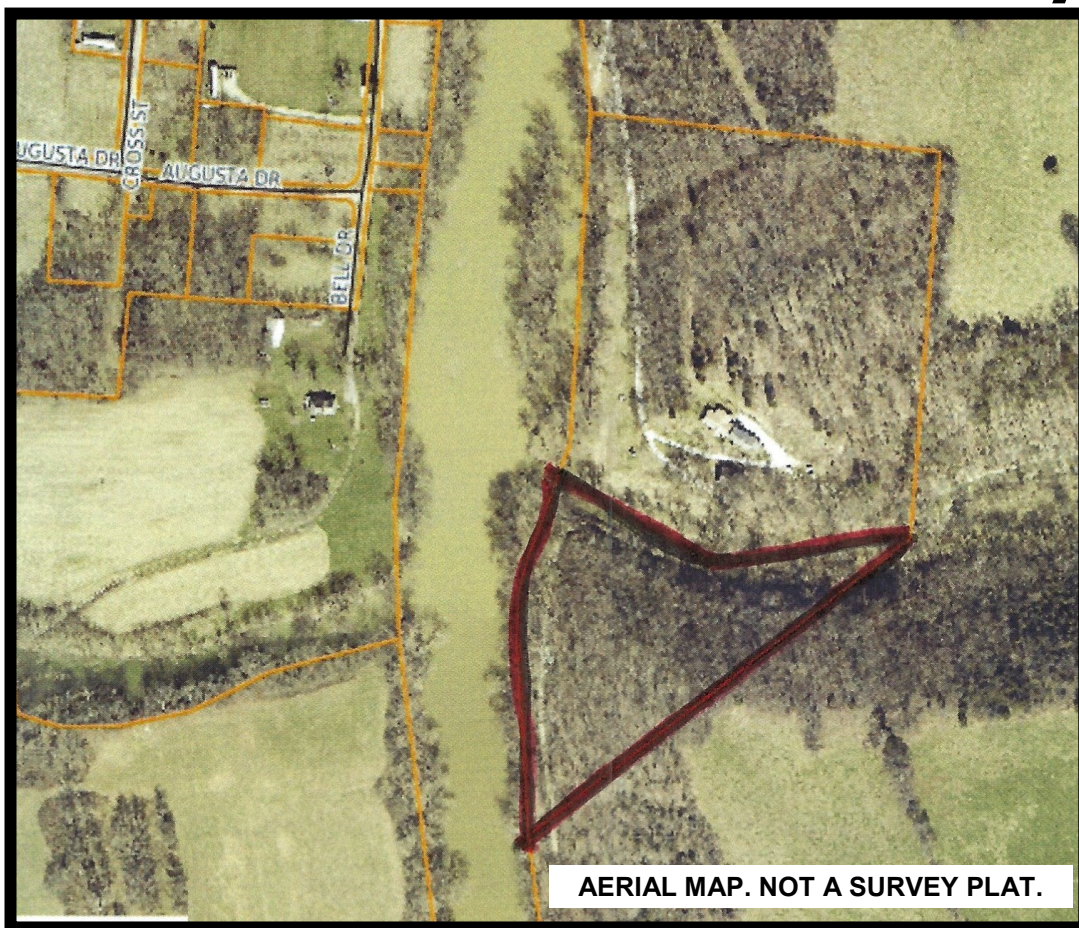
859-234-2912

Fax
859-234-6697

Web-site
www.switzerassoc.com

E-mail
switzer2911@bellsouth.net

Batte Lane - Robertson County



6.63± acres

Excellent recreation land
Main Licking River frontage
Located near Claysville just off Hwy 62

\$39,900