



# SWITZER & ASSOCIATES

## SHAWN RITCHEY, CAI

PRINCIPAL BROKER & AUCTIONEER

Home of  
**EVERYBODY'S  
REALTORS &  
AUCTIONEERS**

Serving your  
community since  
1959.

**SHAWN RITCHEY  
CAI**



Cell  
**859-588-0261**

**Switzer & Associates**  
**Shawn Ritchey, CAI**  
Principal Broker  
111 S. Walnut St.  
Cynthiana, KY 41031  
Office  
**859-234-2911**  
**859-234-2912**  
Fax  
**859-234-6697**  
Web-site  
[www.switzerassoc.com](http://www.switzerassoc.com)

E-mail  
[switzer2911@bellsouth.net](mailto:switzer2911@bellsouth.net)

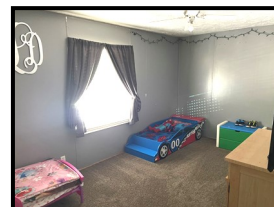
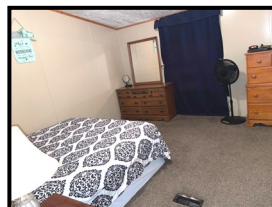
## 1691 KY Hwy 1842E



- ◆ 1.67± acres
- ◆ 2003 Doublewide home
- ◆ 2 bedrooms
- ◆ 2 full baths
- ◆ Living room, dining room, kitchen combo with hard-wood flooring
- ◆ Appliances included: range, refrigerator, dishwasher & microwave

- ◆ Central heat & air (electric) with backup propane heat
- ◆ Large covered front porch
- ◆ Rear deck
- ◆ Metal roof
- ◆ Bluegrass energy electric service
- ◆ Harrison Co water service
- ◆ Washer/dryer hookup

**\$129,900**



INFORMATION CONTAINED HEREIN IS BELIEVED TO BE ACCURATE BUT NOT WARRANTED