



SWITZER & ASSOCIATES

SHAWN RITCHEY, CAI

REALTOR & AUCTIONEER

Home of
**EVERYBODY'S
REALTORS &
AUCTIONEERS**

Serving your
community since
1959.

**SHAWN RITCHEY
CAI**



Cell

859-588-0261

Home

859-234-8172

Switzer & Associates

Shawn Ritchey, CAI

Principal Broker

111 S. Walnut St.

Cynthiana, KY 41031

Office

859-234-2911

859-234-2912

Fax

859-234-6697

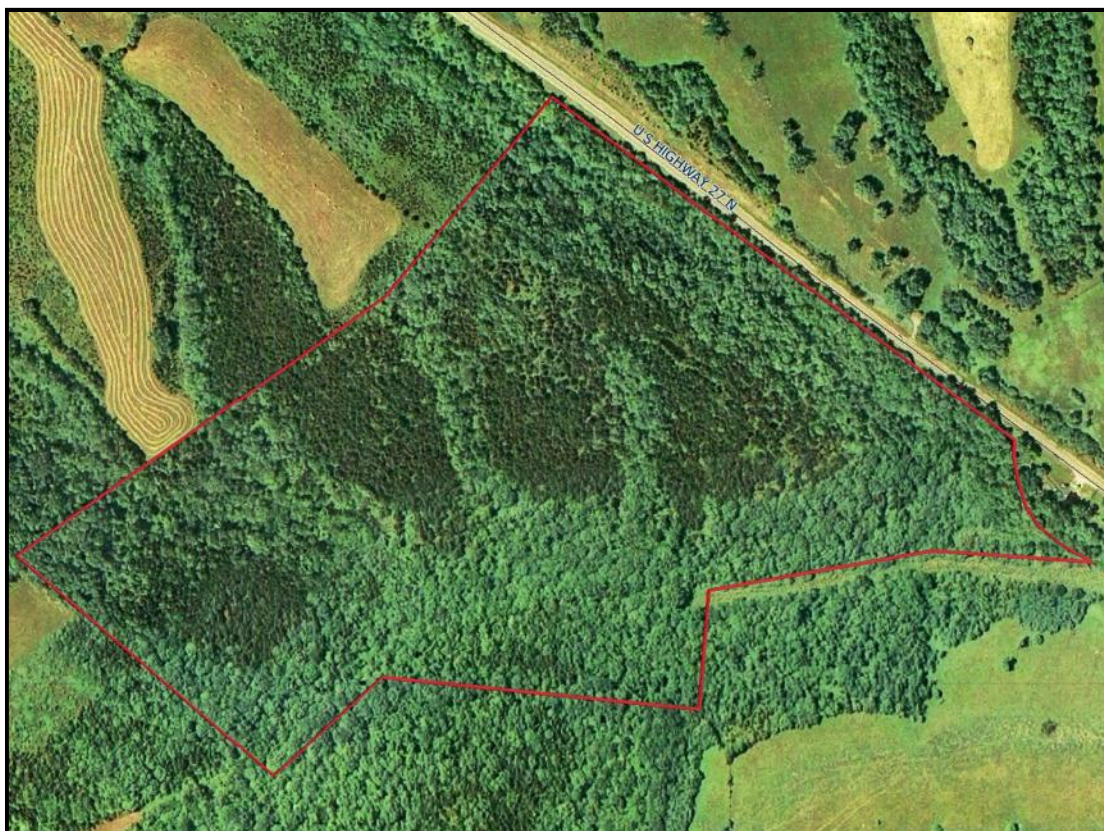
Web-site

www.switzerassoc.com

E-mail

switzer2911@bellsouth.net

US 27N Harrison County



50.24[±] Acres

Located approximately 12 miles north of Cynthiana, KY on
the west side of US Highway 27

Zoned Agricultural

Heavily wooded—excellent for hunting

Harrison County water available

\$135,000

INFORMATION CONTAINED HEREIN IS BELIEVED TO BE ACCURATE BUT NOT WARRANTED