



SWITZER & ASSOCIATES

SHAWN RITCHEY, CAI

PRINCIPAL BROKER & AUCTIONEER

Home of
**EVERYBODY'S
REALTORS &
AUCTIONEERS**

Serving your
community since
1959.

**SHAWN RITCHEY
CAI**



Cell
859-588-0261

Switzer & Associates
Shawn Ritchey, CAI
Principal Broker
111 S. Walnut St.
Cynthiana, KY 41031
Office
859-234-2911
859-234-2912
Fax
859-234-6697
Web-site
www.switzerassoc.com

E-mail
switzer2911@bellsouth.net

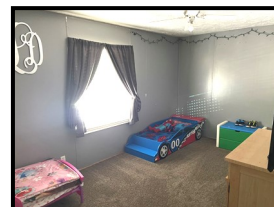
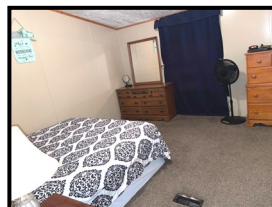
1691 KY Hwy 1842E



- ◆ 1.67± acres
- ◆ 2003 Doublewide home
- ◆ 2 bedrooms
- ◆ 2 full baths
- ◆ Living room, dining room, kitchen combo with hard-wood flooring
- ◆ Appliances included: range, refrigerator, dishwasher & microwave

- ◆ Central heat & air (electric) with backup propane heat
- ◆ Large covered front porch
- ◆ Rear deck
- ◆ Metal roof
- ◆ Bluegrass energy electric service
- ◆ Harrison Co water service
- ◆ Washer/dryer hookup

\$159,900



INFORMATION CONTAINED HEREIN IS BELIEVED TO BE ACCURATE BUT NOT WARRANTED