



SWITZER & ASSOCIATES

SHAWN RITCHEY, CAI

PRINCIPAL BROKER & AUCTIONEER

Home of
**EVERYBODY'S
REALTORS &
AUCTIONEERS**

Serving your
community since
1959.

**SHAWN RITCHEY
CAI**



Cell
859-588-0261

Switzer & Associates
Shawn Ritchey, CAI
Principal Broker
111 S. Walnut St.
Cynthiana, KY 41031
Office
859-234-2911
859-234-2912
Fax
859-234-6697
Web-site
www.switzerassoc.com
E-mail
switzer2911@bellsouth.net

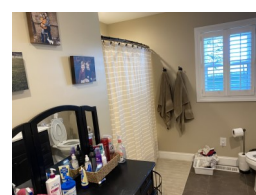
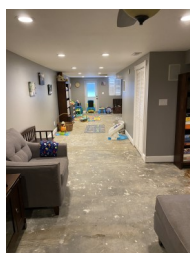
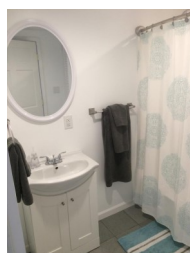
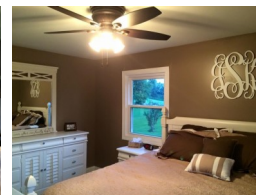
2918 KY Hwy 32 W



Nice brick ranch home basement
situated on a 1.5± acre lot.

- ♦ Living Room with gas log fireplace
- ♦ Eat in kitchen with appliances
- ♦ 3 bedrooms
- ♦ 2 full baths
- ♦ Remodeled in 2016
- ♦ Central heat and air
- ♦ Full finished basement with gas log fireplace
- ♦ 2 car attached garage
- ♦ 1 car detached garage
- ♦ Nice level lot

\$295,000



INFORMATION CONTAINED HEREIN IS BELIEVED TO BE ACCURATE BUT NOT WARRANTED