



SWITZER & ASSOCIATES

GREG MULBERRY

REALTOR & AUCTIONEER

Home of
**EVERYBODY'S
REALTORS &
AUCTIONEERS**

Serving your
community since
1959.

GREG MULBERRY



Cell
859-533-9655

Switzer & Associates

Shawn Ritchey, CAI

Principal Broker
111 S. Walnut St.
Cynthiana, KY 41031

Office

859-234-2911

859-234-2912

Fax

859-234-6697

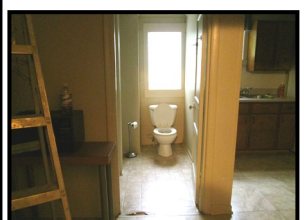
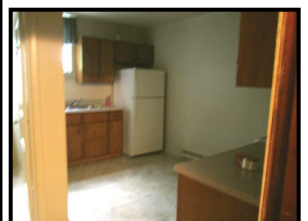
Web-site

www.switzerassoc.com

E-mail

switzer2911@bellsouth.net

230 Main Street, Corinth KY 41010



5 Unit apartment building with full basement.

- **Apt. 1:** 2 bedrooms, kitchen with range & refrigerator, bath with shower, hardwood floors. Rents for \$450/month.
- **Apt 2:** 1 bedroom, living room, bath, kitchen with range & refrigerator, hardwood floors. Rents for \$400/month.
- **Apt 3:** 1 bedroom, living room, kitchen with range & refrigerator, laminate floors. Rents for \$400/month.
- **Apt 4:** 1 bedroom, living room, kitchen, bath, hardwood floors. Rents for \$400/month.
- **Apt. 5:** 2 room plus bath efficiency apartment. Rents for \$425/month-rent includes utilities.
- All apartments have electric baseboard heat.
- Window a/c units are not provided by owners.
- Water service is paid by owners.
- Coin Laundry on site.
- Basement used for storage but can be turned into 2 more units.

\$169,900